

SAMPLE TEST
GATE C – Grades 8-9

Student Name _____

6. What is the Dominant 7th chord in the key of Gb Major?

- a. Db7 b. Gb7 c. Eb7 d. Cb7

7. Which inversion of the Dominant 7th chord has the 3rd in the bass?

- a. 1st inversion b. 2nd inversion c. 3rd inversion d. none of the above

8. What is the correct spelling of an Eb diminished triad?

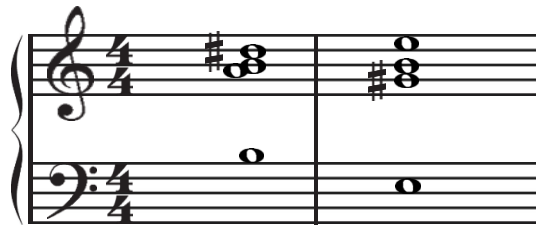
- a. Eb-Gb-Bb b. Eb-Gb-Bbb c. Eb-Gbb-Bbb d. Eb-Gbb-Bb

9. Which of the following is a **Half-Diminished 7th chord**?



- a. b. c. d.

10. This is a _____ cadence.



- a. Perfect Authentic b. Imperfect Authentic c. Plagal d. Half

11. Which of the following intervals is a tritone?

- a. Dim. 8th b. Aug. 5th c. Dim. 4th d. Aug. 4th

12. What is the *Mediant*?

- a. the middle of a measure b. a moderate tempo c. the 3rd note of a scale d. a fortune teller

SAMPLE TEST
GATE C – Grades 8-9

Student Name _____

13. What form of musical composition has a *Recapitulation*?

- a. Suite b. 3-part song form c. Sonata-Allegro d. Fugue

14. What is the meaning of *leggiero*?

- a. less motion b. gradually getting faster c. slowing d. lightly

15. What is the meaning of *assai*?

- a. enough b. in the same manner c. much slower d. with a lilt

16. Which time signature indicates compound triple time?

- a. $\frac{6}{4}$ b. $\frac{6}{8}$ c. $\frac{9}{8}$ d. $\frac{12}{8}$

17. What is the leading tone of the b harmonic minor scale?

- a. A b. A# c. G# d. G

18. What is the beat unit in $\frac{3}{2}$ time?

- a. eighth note b. quarter note c. dotted quarter note d. half note

19. Which interval is an Augmented 6th?

The image shows four musical staves, each with a treble clef and a key signature of one flat (Bb). The intervals shown are: a. G4 to G5 (perfect fifth), b. G4 to A5 (major sixth), c. G4 to A#5 (augmented sixth), and d. G4 to B5 (major seventh).

20. Which note is the *submediant* of c harmonic minor?

- a. Bb b. Ab c. B d. A

21. What is the *supertonic* triad in the key of B Major?

- a. C# Maj. b. c# min. c. c# dim. d. C# Aug.

22. What is the third of a Gb Major triad?

- a. Bb b. Bbb c. Db d. D

SAMPLE TEST
GATE C – Grades 8-9

Student Name _____

23. Which note(s) correctly completes the measure?

a. b. c. d.

24. Which of the following statements is **not true** about a *fugue*?

- a. It is polyphonic in texture
- b. The 'answer' imitates the motive in a different key
- c. The motive is only heard at the beginning of the piece
- d. Each voice is equally important

25. What type of music is specific to a certain country and usually handed down through oral tradition?

- a. Art Song b. Opera c. Anthem d. Folk Song

26. A *whole tone scale* is different from every other scale because it:

- a. always begins on C b. uses only whole steps c. uses only black keys d. always begins on F#

27. What is the relative minor key of B Major?

- a. g# minor b. g minor c. d# minor d. b minor

28. What is the name of the interval if you inverted a Major 3rd?

- a. Major 6th b. minor 6th c. Aug. 6th d. dim. 6th

29. What type of *non-chord tone* is in the first measure?

- a. anticipation b. upper neighbor
- c. lower neighbor d. passing tone

SAMPLE TEST
GATE C – Grades 8-9

Student Name _____

36-40. Write the letter next to the name that identifies each ornament on the correct line. (1 pt. each)

- A. Mordent
- B. Grace Note
- C. Trill
- D. Turn
- E. Tremolo

36. _____



37. _____



38. _____



39. _____



40. _____

